

Specification **PTP®**

Professional **T**emperature **P**rofiler

Measuring Board - REFLOW V5

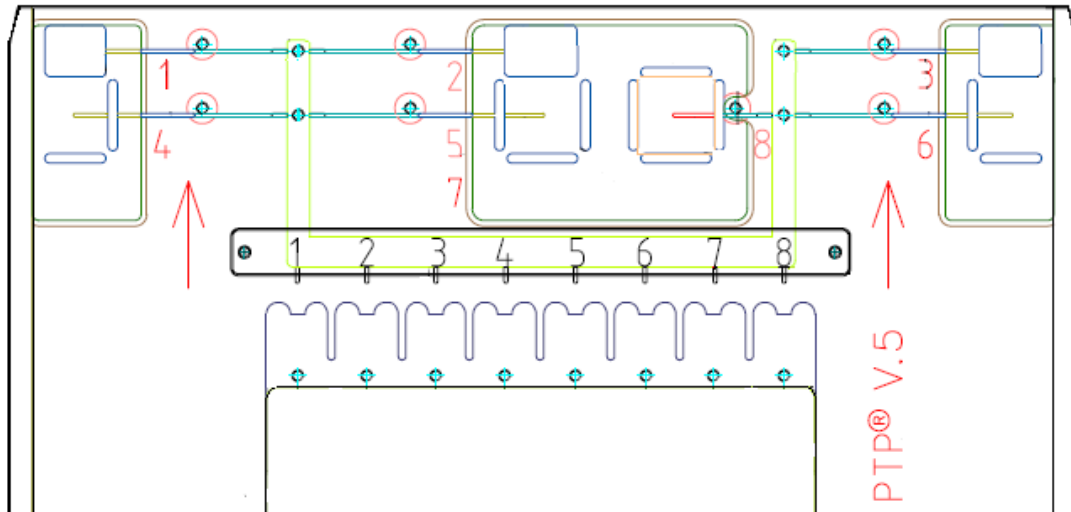
Prepared for taking up the PTP® electronics with real time Bluetooth™ Data-Transmitter

Maximum ambient temperature for 20 s [°C]	350
Ambient Temperature (long time) [°C]	280-300
Size (standard board) [WxL]	300x390x14 mm
Max. Height with Shuttle (from conveyor / pin chain)	<= 25 mm
Tolerance of thermal sensors [°C], K-Type, class 1, IEC 584 After calibration [°C] (option)	<= +-1.5 <= +-0.2
Max. Temperature K-type plug connector brown [°C]	320
Max. Temperature K-type thermal cable glass silk [°C]	400

RoHS

The PTP® electronics are produced according to the ROHS (Restriction of the use of certain Hazardous Substances in electrical and electronic equipment) directive.

Sketch measuring board REFLOW V5A



Oven Check Up

For the oven check-up should preferably be used all thermocouples 1 to 8. The measurement of the cross belt profile and furthermore the gradients/slope evaluation of a reflow oven is done with thermocouples 4 to 6. For all measurements, the determination of the atmosphere temperature of the reflow oven is recommended with help of thermocouples 1 to 3. It is possible to check the constancy of the atmospheric temperature of a reflow oven. Within each zone area, nearly unchanged zone temperatures stay for good thermal isolation between zones. Furthermore, one gets a fast piece of information about the zone division of the oven and the maximum attainable temperature at surface level of the PCB. Sensor 8 simulates a very high thermal mass (extra large device) and will test the oven with some kind of "heavy load". Sensor 7 is used to get information about the influence of the bottom heater.

Contents of delivery

- Measuring board with integrated modules:
 - 3x cross profile sensors
 - 3x atmospheric temperature sensors
 - 1x bottom heater sensor
 - 1x measurement standard sensor
 - 1x prepared for use with electronics-Shuttle
 - 1x contact strip for 8 sensors
- Documentation (Manual and description of measuring board)
- 8 K-type thermo cable for the connections contact-strip to electronics
- Aluminium-case for transportation (antistatic storage)

Option: Delivery of customized measuring boards on request!

On the Measuring Board **PTP® Reflow V5** are 8 Sensors, they are best for oven check up and profile optimization. **Reflow V5** is prepared for use with active conveyor middle assistance.

Trademarks

Bluetooth™ is a trademark owned by the Bluetooth SIG, Inc,
PTP® is a registered trademark owned by the globalPoint ICS GmbH.